

# EMERGING EARTH

RESIDENCY

## RETREAT GUIDE

August 19 – 23 2026  
Batukaru Coffee Estate, Bali

Dev Lewis, Diya Pinto, and Made Masuk

[emergingearth.world](http://emergingearth.world)



# Greetings!

*Welcome to Emerging Earth Bali 2026.*

If you're visiting from the [website](#), this guide is the deep dive into the experience, the methodology, the people, and the practical details.

We suggest going through it in full, and then sending a short [expression of interest](#) to join as a next step. This is not a commitment but an opportunity for you to ask us anything, for us to learn more about your story, and to help you make a clear decision about whether to join us.

## **Why Emerging Earth & Why Bali?**

Emerging Earth comes out of both of our journeys.

Dev spent over a decade in policy, working across tech and geopolitics, and arrived at a realisation that the roots of our global problems ran deeper than any policy could reach. Diya (a Bali resident) has led with intuition since she was a teenager, in close relationship with the earth, working with energy, healing, and creative art. We both work with a common teacher and share a path of opening up to our true nature.

Bali is one of the few places left where the old story, that we belong to the earth is still being lived. However that foundation is showing signs of fragility. The island is suffering from a waste management collapse. This is impacting the air, the water, and the basic conditions for life on Bali. The island is at a breaking point after

decades of rapid influx of tourists and foreign residents, government inaction, and urban development. A deeper view sees this as the tip of the iceberg, an outcome of an erosion of the old stories and knowledge that made Bali what it is.

Our collaborator and co-facilitator, Made Misuk is a chef, forager, and community food educator from Penatahan Village in Bali, doing the work to help Balinese people remember how to live in right relation. She works directly with ancient manuscripts and the forest, and weaves many streams of traditional and knowledge and practises around food.

We see that the climate crisis at its root is a story & culture problem. We inherited beliefs that humans are separate from the earth, that nature is a resource, and that growth = progress. Those beliefs now run every system we are trying to change. Emerging Earth addresses the story underneath through practise.

Together we intend to go on a journey weaving traditional knowledge and Futures thinking to act for Bali.

Batukaru Coffee Estate is a beautiful place to do this work.

We hope this inspires you to join us.

*Dev Lewis & Diya Pinto*

Emerging Earth Bali Facilitators

[CLICK TO APPLY](#)



*“Our relationship with earth cannot heal until we hear its stories. But who will tell them?”*

*Robin Wall Kimmer, Braiding Sweetgrass*

# WHO THIS IS FOR

- Your work is rooted in the earth: studying it, writing about it, designing for it, fighting for it.
- You want to support/help/contribute to Bali's future, by learning from Balinese traditional knowledge.
- You're very comfortable leading with intellect. Your analytical mind is your greatest professional asset. But you sense it might be limiting your experience of life more fully.



- You can see Bali's fragility and the systems you grew up in are crumbling and you want to contribute to creating something new.
- You know there is a difference between thinking about the earth and feeling as the earth. Between understanding interconnection and feeling it.
- You love being in nature. But you want more practice to be in relationship with it; to draw from it, to listen to it, to let it inform your work.
- You want practices, not just theory. And time in nature, with peers, away from screens.

- You want to connect more deeply with others doing the same work in different backgrounds and industries.

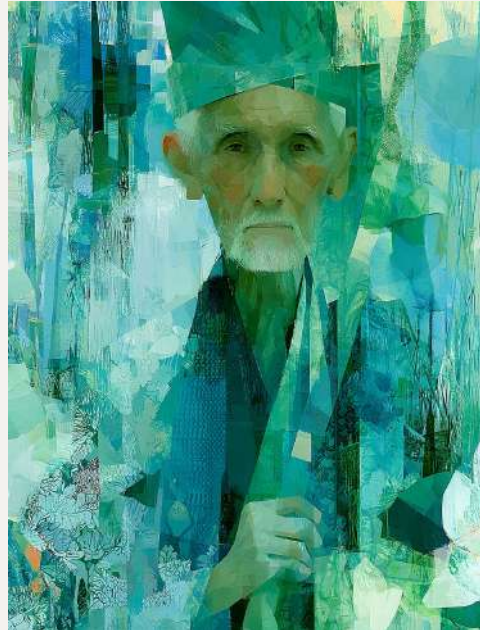
**You might work in:**

Climate research · Futures · Academia · Public policy · Advocacy · NGO · Regenerative finance · Impact investment · Nature writing · Sustainability consulting · Ecological design · Environmental education · Conservation · AgriTech · ClimaTech · Regenerative agriculture · Startup & Business Founders

Does this resonate with you? [Apply now](#)

*A short 2 minute application to setup a conversation with Dev or Diya. No commitment required — just a chance to connect, and answer your questions.*

# WHAT YOU WILL LEAVE WITH



**Practices** | things you can actually do to shift how you live with land, listen to intuition, and futures thinking.

**Traditional Balinese Knowledge** | On living in right relationship to the land, through food, forests, and foraging.

**New muscle memory** | a more alive, embodied relationship with the earth built through four days of direct experience, not just concepts.

**Re-energised** with a renewed sense of hope and agency in your work and life.

**A trans-local community** | connection to a local Balinese community of wisdom holders and membership to the Light Forest community of people across public policy, planetary health, futures, and regenerative finance. The gathering is the beginning, not the end.

**Emergent Outcomes** — a future vision for Bali and emergent movements such as formation of Bali focussed community shaped by everything the four days opened.

An optional **private Jnana Kanda healing session** with Diya — a Balinese healing lineage taught by Guru Mangku Alit Ajna, working with prayer and intention to support mental, physical and spiritual clarity.

And something harder to name: a felt sense of the earth as a presence. A quieter mind that can hear more. That tends to change everything.

Does this resonate with you? [Apply now](#)

*A short 2 minute application to setup a conversation with Dev or Diya. No commitment required — just a chance to connect, and answer your questions.*

# THE EXPERIENCE



Emerging Earth is designed as a journey. Each day builds on the one before. The following is a tentative agenda subject to change.

## **(Half day) DAY 1 — Arrival & Cohort Connection**

Biodynamic coffee tour · Opening ceremony · Intention setting · Story circles

## **DAY 2 — Bali Connection**

Forest Food Foraging, Balinese Tradition on sustainable living & Subak systems from Lontar Manuscripts.

*Lontar Manuscripts are ancient scriptures (written on palm leaf) that hold traditional knowledge from Bali and Java on medicine, food, rivers, and living in right relationship with the earth. These*

*scriptures have been locked out of modern knowledge systems for centuries and are slowly being revived.*

### **DAY 3 — Stillness & Nature Connection**

Guided meditation · Silent nature exploration · Nature Wisdom Council

*Nature Wisdom Council, developed by Public Policy expert [Ora-orn Poocharoen](#), uses imagination and role-play exercises where human participants speak from the perspective of non-human entities (trees, rivers, soil, animals).*



### **DAY 4 — Imagining New Worlds for Bali & Emergent Creation**

· Imagineering Futures (CLA) Workshop, Bringing ideas from the 4 days into form.

[Causal Layer Analysis \(CLA\)](#) developed by futurist Sohail Inayatullah, offers a method for mapping the stories and metaphors that structure our unconscious assumptions about reality and envision transformative futures.

### **(Half day) DAY 5 — Gratitude & Return**

Asks & offers market · Closing ceremony · Gratitude to the land and each other.

*Every day begins with meditation and somatic practice. Shared meals and co-created rituals weave through the whole residency. We do not fill every moment. Emergence needs room.*

# VOICES FROM EMERGING EARTH CHIANG MAI

"As someone working in climate and energy, Emerging Earth allowed me to step outside the usual business-as-usual approaches. Nature Wisdom Council created a powerful container to listen more deeply — not just intellectually, but relationally, to the natural world. I left with a renewed sense of clarity."

**Stanley Ng, New Energy Nexus Global Partnerships Director**



"Meeting people from completely different worlds — sectors, regions, specialities — and actually talking about healing and regeneration together with so much love and care. That doesn't happen in most rooms I'm in. For people whose job is changing the world, that pause isn't a luxury. It IS the work."

**Sadia Hossain, Programmes, Partnerships & Systems**



The Nature Wisdom Council really sticks — roleplaying as an aspect of nature is something you carry beyond the room. The balance between being mindful within and trying to understand the experience of the other is something changemakers need to constantly navigate. This gave me practical tools to do that."

**Shakil Ahmed, Futurist and Founder of Ridiculous Futures**



"Emerging Earth is a space where your inner self meets the world. I experienced both deep stillness and meaningful connection — with others and with nature. A rare opportunity to engage across the personal, relational and planetary levels."

**Vivian Chen, Program Director, Reimagine Spaces**



[Apply now](#)

*A short 2 minute application to setup a conversation with Dev or Diya. No commitment required — just a chance to connect, and answer your questions*



*“I cannot be healthy until my rivers are healthy, until my community is healthy”*

Geordan Shannon Planet.Health

# OUR APPROACH

Our political and economic institutions are crumbling, after taking the Earth's natural systems to breaking point. This is the metacrisis, born from broken stories about who we are in relationship to each other and the earth.

In the collective, narratives of separation, domination and fear are the only stories that are amplified. We have inherited a world built on them and they shape us, what we build, what we value, what we think is possible.

Building new systems starts with healing the narratives both within us and outside us. By recovering the stories that were there before, stories of humans being inherently collaborative, caring and living in '[right relationship](#)' we can begin to birth the stories that reflect worlds we want to inhabit.

Through stillness and relationships with the earth, going beyond the past conditioning of the rational mind and intellect, healing narratives become possible, and new stories emerge. [Community can be the landing pad](#) to bring them to life.

*The methodology of this retreat combined spiritual attention to our bodies and minds, and environment (inner work) with facilitated dialogue on planetary challenges and co-creation (outer work), creating space for inner connection, cohort connection, and ecological connection. The intention for this approach is to bring in wisdom on contemporary challenges around climate and health, and raise awareness among the cohort.*



Does this resonate with you? [Apply now](#)

*A short 2 minute application to setup a conversation with Dev or Diya. No commitment required — just a chance to connect, and answer your questions.*

## **Indigenous & Non-Western Ways of Knowing**

We are inspired by the work of **Guru Sugi Lanus**, a Balinese researcher, writer, and cultural historian, who specializes in lontar (palm-leaf manuscripts) from Bali and Java, Indonesia, reveals how these texts on food, medicine, water management, community, and more, offer a compass to how we live in relationship to our environment, which includes human and non-human life, and navigate the complex challenges we face. These scriptures have been locked out of modern knowledge systems for centuries and are slowly being revived.

We are also inspired by the work of [Robin Wall Kimmerer](#), who writes of re-story-ation — restoring our relationship with the land through recovering its stories. Tyson Yunkaporta's five interconnected ways of knowing from his book [Sand Talk](#): Story mind, Kinship mind, Dreaming mind, Ancestor mind, and Pattern mind. We draw on approaches from Indic and East Asian Philosophies that point us to recognising our true nature.

They are rigorous and generative forms of intelligence that the Western intellectual tradition, which formed the core institutions of our world for the past 400 years, has largely abandoned. This is the root problem and we are here to begin recovering.

## **Planetary Health & Care**

[Planetary health](#) holds that human wellbeing and ecological wellbeing cannot be separated. Our physical and mental health is inseparable from the health of the ecosystems we inhabit. This is an empirical claim, increasingly supported by evidence across medicine, ecology, and public health. Geordan Shannon's [Spaces of Care](#) framework extends this into how we gather and organise. Care for ourselves, for each other, for the land. It is the infrastructure that makes serious work possible.

## **Transformative Futures & Intuition led Imagineering**

From Futures Studies, we take the approach that our work is less about knowing what comes next and more about freeing ourselves from the old stories of the past that limit our capacity to imagine what can be.

We look to imagination, at its deepest layer, as not just a mental activity — but a state of being. One that is embodied: present, in tune with the body and its emotions. Relational: in deep connection with the people around us and the land beneath our feet.

The two methods we use in our workshops allow us to channel intuition into ideas and form.

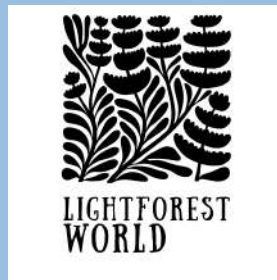
[Causal Layer Analysis \(CLA\)](#), developed by futurist Sohail Inayatullah, offers a method for mapping the stories and metaphors that structure our unconscious assumptions about reality, and vision transformed futures.

Nature Wisdom Council, developed by Public Policy pioneer [Ora-orn Poocharoen](#), uses role-play exercises where human participants speak from the perspective of non-human entities (trees, rivers, soil, animals). This cultivates profound empathy, humility, and respect for ecological limits

These are also associated with academic methods such as Anticipatory Governance and Participatory Action Research.

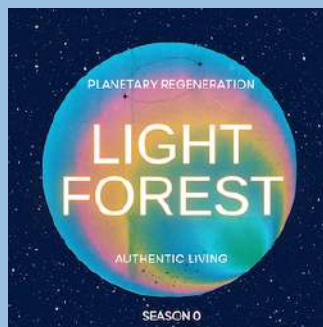


# LIGHT FOREST AND EMERGING EARTH



Light Forest is a platform for personal transformation and planetary regeneration — through podcast, workshops, residencies, and community, created by Dev Lewis.

This project began in 2024 as a [podcast](#) holding conversations with changemakers from around the world — futures thinkers, indigenous knowledge holders, planetary health practitioners, policy scholars, macrohistorians and spiritual teachers — exploring the root causes of our planetary crisis.



Insights from the podcast contributed to the creation of Emerging Earth residency in collaboration within collaboration with guests from the podcast.



The first Light Forest Emerging Earth residency took place in Chiang Mai in 2025 bringing together changemakers for planetary health.

Read the [Story of Emerging Earth Chapter](#) to get a full picture of what Emerging Earth is about.

The [Emerging Earth Room at TEDx Chiang Mai 2025](#) invited attendees on a multi-sensory journey of “Climate Action” through regeneration, Through talks, workshops, soil, seeds, functional mushrooms, and forest tea.



Watch Dev Lewis' [TEDx talk](#) explaining the theory of change.



[Apply now](#)

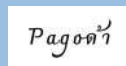
*A short 2 minute application to setup a conversation with Dev or Diya. No commitment required — just a chance to connect, and answer your questions*

Light Forest's mission is to help us bring more 'Light' into how we live and regenerate our planetary systems. What does 'light Forest' represent?

- 'light' (lowercase L) is clarity to see reality as it is
- 'Light' (uppercase L) is consciousness, the life force that animates all beings.
- Just like a Forest, transformation does not follow a policy plan, but through spontaneous emergence with the right conditions.

The Light Forest approach sits at the liminal space of changemaking through embracing the relationship between our 'inner' minds and 'outer' world.

Our translocal network of collaborators includes: [Planet.Health](#) [Science Spirituality Public Policy Network \(SSP\)](#).,



# WHY BALI

Bali is one of the few places left where the old story that we belong to the earth, not the other way around is still being lived. The Balinese philosophy of *Tri Hita Karana* holds that harmony between people, nature and the sacred is not an ideal to work toward. However that foundation is showing signs of fragility.

The island is suffering from a waste management collapse. This is impacting the air, the water, and the basic conditions for life on Bali. The island is at a breaking point after decades of rapid growth in tourism, influx of foreign residents, government inaction, and economic development. In 2025 and 2026, devastating floods tore through the island. A deeper view sees this simply the tip of the iceberg, an outcome of an erosion of the old stories and knowledge that made Bali what it is. The time for us to take action is now, as local Indonesians, and people from around the world who have made Bali their home.

Made Misuk is from a chef, forager, and community food educator from Penatahan Village, quietly doing the work to help Balinese people remember how to live in right relation. She is member of a web of cultural workers working directly with ancient manuscripts. Her own practises are grounded in the forest garden and regenerating our relationship to ourselves through food.


Emerging Earth is hosted here, with Made, in the spirit of reciprocity, to learn from the land but to honor and give in return more than what we take, and incubate a space where traditional balinese knowledge can be translated and infused into modern Bali, and inspire action for a regenerative Bali.





# THE STAY


## WHERE YOU'LL STAY


The gathering is held at Batu Karu Coffee Estate in Jatiluwih, on the southern slopes of Mount Batukaru, surrounded by ancient protected forest. Halfway up the mountain, the ten-acre estate looks out over the Jatiluwih rice terraces – and on a clear day, all the way to the ocean, the islands beyond, and as far as Lombok. This valley is part of the Subak system – a network of canals, temples and irrigation that has shaped Balinese agriculture and spiritual life since the 9th century, recognised as a UNESCO World Cultural Heritage site since 2012.

 **The Rooms** Built from natural and recycled materials, each room opens directly to jungle, mountain or valley. Participants may choose between shared and private rooms.

 **The Water** Spring water runs straight off the mountain – pure, mineral-rich, clean enough to drink from the source.

 **The Food** Three vegetarian meals a day. This is food as philosophy – grown with intention, served with care, deeply aligned with the spirit of what we are gathering to do.

 **Kentri's Kitchen** Proprietor Kentri Norberg cooks the food she grew up eating – just-picked, minimally fussed-with, naturally medicinal. House-made coconut oil, palm sugar from the farm next door, rice from heirloom fields below the property. Nothing travels far to reach you.

 **Healthy Soil, Healthy Life** Batukaru rejects chemical pesticides entirely, believing that healthy soil grows nutritious food and that

wholesome food is the foundation of good health. The estate works in cooperation with the wider rhythms of the cosmos – moon cycles, seasons, living systems.

☕ **The Coffee** Grown biodynamically on the adjoining plantation, roasted on site. Worth waking up for.



Does this resonate with you? [Apply now](#)

*A short 2 minute application to setup a conversation with Dev or Diya. No commitment required — just a chance to connect, and answer your question*

# YOUR FACILITATORS

I'm a researcher, podcaster, community builder, public speaker, and workshop facilitator. My work draws on unlikely webs across tech policy, geopolitics, Futures, Web3, Chinese and Southeast Asian culture, spirituality, and ecology.

I've helped grow a tech policy think tank Digital Asia Hub over 8 years, working with organisations like Google APAC, Konrad Adenauer Stiftung, and Berkman Klein at Harvard; written for Nesta and Berkman Klein, spoken at TEDx, GSMA Mobile Week, and Funding the Commons, and been cited in Bloomberg, Nikkei, and the South China Morning Post.

Today I am based in Chiang Mai, where that inquiry has taken root in several interwoven ways. I host the [Light Forest Podcast](#), steward [digi-cn](#) & [cosmo-local Chiang Mai](#), and serve as a visiting researcher Chiang Mai University's School of Public Policy.

I also play [handpan](#), and learn how to grow food.



**Dev Lewis**

[Link to Dev's Work](#)  
[TEDx Talk on Climate Action](#)



# YOUR FACILITATORS

Diya lives in Bali with her family and three dogs. At fifteen, she began to perceive subtle energies, including auras and the emotional states of those around her. That same year, she took time away from school to live in Hampi, where she trained under actor Adil Hussain while living simply, close to the land.

That experience deepened her sensitivity to both the natural world and the inner lives of others. Since then, her path has moved through Bollywood, organic farming, illustration, photography, and design, each step informing her ongoing inquiry into perception and consciousness. She later met her teacher, GD, whose mentorship continues to shape her practice.

Diya believes that the most meaningful creative work emerges from stillness. She is currently exploring how healing, art, and design can come together in her work.

She is an intuitive healer trained in Jnana Kanda, a Balinese healing



[IG: @thousand.devotions](https://www.instagram.com/thousand.devotions)

lineage taught by Guru Mangku Alit Ajna, and the author of *The Woven Worlds*, an unpublished children's book that came to her in a dream.

# YOUR FACILITATORS

My name is I Dewa Ayu Made Sri Dwiastuti, also known as Made Masak, a chef, forager, and community food educator from Penatahan Village, Tabanan, Bali. Since 2017, I have focused on sustainable, plant-based cooking rooted in Balinese tradition, ethical foraging, and cultural preservation.



I work as a chef and menu developer at The Playful Table, Morin Resort in Nusa Lembongan, creating seasonal gluten free and plant forward menus inspired by local ingredients. I am also the founder of Mawija, a permaculture-based community kitchen initiative that works with women, children, and elders to preserve traditional food knowledge through foraging, fermentation, and communal cooking.

IG: [Made Masak](#)

I have collaborated with Potato Head Bali, Room4Dessert Academy, Morin, sharing indigenous ingredients and food traditions through workshops, events, and ethical foraging experiences. Through my work, I see food as storytelling, healing, and a way to protect both culture and nature.

# PRACTICAL DETAILS & INVESTMENT

## Dates & Location

**August 19–21, 2026** Batukaru Coffee Estate, Jatiluwih, Bali, Indonesia

## Cohort Size

Limited to 12 participants with a minimum of 5 to proceed. Places are confirmed on a rolling basis — we recommend not waiting.

## Cost of Participation

Your participation fee covers four nights accommodation, all meals, the full programme, your Jnana Kanda healing session with Diya. It does not cover flights or travel to Bali, or travel to/from Batukaru.

**The fee reflects the true cost of the experience** — accommodation, food, activities, and **a modest contribution toward facilitation** (<10 %). We have kept it as accessible as possible while ensuring the quality of what we are offering. Checkout the website for more pictures of the rooms.

**Single room — \$1,100** Your own private room at Batukaru

**Shared room (2 people) — \$850** A 25% reduction from the single rate. Shared with one other participant.

The rooms are spacious and we invite you to look at pictures of the room on the website.

## 3 Early birds — additional 10% off

Available for applications confirmed before June 15.

*If cost is a genuine barrier, reach out to us before assuming this isn't possible. We cannot offer full scholarships but we are open to finding a middle ground in the spirit of reciprocity.*

# PAYMENT

A deposit of 25% is required to confirm your place. The remaining balance is due before arrival.

**Please note:** due to our commitment to Batukaru Coffee Estate, we can only offer refunds on deposits or payments made 1 month before the start date of the residency. We encourage you to ensure you are fully committed before confirming your place, and to arrange appropriate travel insurance for your trip.

## *Spaces of Care — What We Ask of You*

How we show up together is as important as what we gather around. We ask all participants to honour the following:

- **Full presence for all four days** — no parallel professional calls or meetings during the residency
- **Mindful use of devices** — phones and laptops kept to private spaces, not shared programme areas
- **Shared responsibility** — for the space, the meals, and the community we are creating together
- **Vegetarian meals are provided** — alcohol, cannabis, and other substances are not part of the programme

On the first day we will co-create a shared protocol together. These agreements belong to the whole group.



# *Travel & Visa*

Participants are responsible for their own flights and travel to Bali. Most nationalities receive a visa on arrival or visa-free entry for up to 30 days – please check current requirements for your passport well in advance.

Travel and medical insurance is not required but strongly recommended.

The nearest airport is Ngurah Rai International Airport (DPS), Denpasar. Batukaru Coffee Estate is approximately 1.5-2 hours from the airport. We will share transfer information with confirmed participants.

Arrive no later than the morning of August 19<sup>th</sup> to check in by 1pm.  
Depart no earlier than the afternoon of August 23<sup>rd</sup>.



# HOW TO JOIN

[Apply now](#)

*A short 2 minute application to setup a conversation with Dev or Diya. No commitment required — just a chance to connect, and answer your questions, and get you setup to join.*

# FREQUENTLY ASKED QUESTIONS

## **Do I need a spiritual practice already?**

No prior meditation practice or spiritual experience needed. What matters is curiosity and willingness — a sense that there's something beyond your analytical mind that you want to explore. We hold both intellect and intuition. You won't be asked to abandon one for the other.

## **How is this different from a wellness retreat, yoga retreat, or a co-living workshop?**

Emerging Earth is not a wellness or spiritual retreat. It's a professional development experience for people whose work touches the earth. We draw on practices you might find in those spaces — stillness, nature connection, somatic work — and blend them with community dialogue and rigorous frameworks at the cutting edge of systems change: Participatory Action Learning, Traditional Ecological Knowledge (TEK), and Transformative Futures methodology.

### **I'm interested but not sure this is the right moment. How do I know if I'm ready?**

If you're asking that question, you're probably ready. A sense that you need to bring new ways of knowing/intuition into your work to address the Climate crises. Download the Retreat Guide or book a short discovery call with us — no commitment, just a conversation.

### **This approach appeals to me but my work is not directly related to the earth. Is this still for me?**

Even if your work doesn't sit directly within these fields but you find yourself interested in this approach, you belong here.

### **Can I get a letter to reimburse my participation through company allowances — wellbeing, learning & development, or similar?**

Yes. participants can expense Emerging Earth through workplace wellbeing, professional development, or learning budgets. Once you've confirmed your place, share your context with us and any specific language your employer requires — and we'll provide a tailored letter you can submit to your team or HR.

### **How much of the programme is structured versus open?**

Roughly 60% structured, 40% emergent. The days have a clear arc and rhythm, but we do not fill every moment. The space between sessions – for walking, writing, sitting by the water, or simply being – is protected and intentional. Emergence needs room.

### **What does it mean to be a co-creator rather than a participant?**

We invite you to bring what is genuinely alive in you – your questions, your skills, your stories – rather than arriving as a passive consumer of an experience. This orientation tends to make the residency more meaningful for everyone. On the first day we co-create a shared protocol together. The agreements belong to the whole group.

## **Commitment & Conduct**

### **What is the expected time commitment each day?**

Full presence for all four days is a core agreement. We request you don't schedule calls or meetings during the program as this is not a program that you can attend partially.

### **What is the device policy?**

Phones and laptops are welcome in private spaces but asked to be kept out of shared programme areas – sessions, meals, and communal spaces. This is not a full digital detox, although we encourage limiting device time to a minimum as they will impair the quality of your presence.

## **What is the policy on alcohol and substances?**

Alcohol, cannabis, and other substances are not part of the programme – a conscious choice in service of the depth of presence this residency is designed to cultivate. Indonesia also has strict laws on controlled substances. Participants are responsible for understanding and complying with Indonesian law.

## **Food & Wellbeing**

### **What do you eat?**

All meals are vegetarian, grown biodynamically on the Batukaru estate – farm to table in the most literal sense. The food here is seasonal, intentional, and prepared with care. If you have specific allergies or dietary requirements beyond vegetarian, please note them in your application and we will do our best to accommodate.

### **Is the programme physically demanding?**

The program will involve moderate walking through the Batukaru space and nearby forest garden. All other activities are gentle and accessible. If you have any physical considerations, please let us know in your application.

### **What if I'm going through a difficult time emotionally or mentally?**

Emerging Earth is a transformative container – not a therapeutic one. We are facilitators, not therapists. If you are currently in a period of acute mental health difficulty, we would recommend speaking with a

professional before attending and discussing your situation with us before applying. We want to ensure this is the right moment for you.

## **Investment & Accessibility**

### **What does the price cover?**

Your participation fee covers four nights accommodation, all meals, the full programme, your private Jnana Kanda healing session with Diya, the water purification ceremony, and your zine or art book. It does not cover flights, travel to Bali, or travel insurance.

Email us at [devlewis@proton.me](mailto:devlewis@proton.me) if you need to reach out